





ABOUT US

Australian Leader has been a trusted partner in the Australian construction industry for over 20 years. Specializing in delivering nationwide projects that excel in various sectors such as; commercial, industrial, residential, aged care, education, government, fit outs, refurbishments, facility maintenance & heritage restoration.

Australian Leader is known for commitment to open communication, collaboration, and innovation. We build strong partnerships with our clients and delivery partners, working together to achieve shared goals. Our experienced senior management team, combined with our dedication to client satisfaction, has enabled us to successfully deliver a wide range of projects.

Our team of experienced professionals is dedicated to providing high-quality workmanship, exceptional customer service, and innovative solutions tailored to meet the unique needs of each project. With a proven track record of success, we have established a reputation for reliability, efficiency, and exceeding client expectations.



OUR PHILOSOPHY

Transparency

For two decades, we've built a reputation on honesty and openness. Every project, from the smallest renovation to the largest commercial build, is approached with transparency. Our clients are kept informed throughout the process, from the initial planning stages to the final inspection. We believe that open communication fosters trust and ensures that our projects meet their exact needs.

Client First

Our clients are the heart of our business. We understand that every project is unique, and we tailor our approach to meet their specific goals and requirements. Whether it's a residential home, a commercial building, or a industrial project, we prioritize our clients' satisfaction above all else. Our commitment to excellence has resulted in a 90% client retention rate, a testament to the trust and satisfaction we foster with our clients.

Quality

Quality is the cornerstone of our work. We're committed to delivering projects that not only meet but exceed industry standards. Our team of skilled professionals uses the latest techniques and materials to ensure that every project is built to last. We take pride in the quality of our craftsmanship.

Collaboration & Passion

At Australian Leader, we believe that the best results are achieved through collaboration and passion. Our team works together seamlessly to ensure that each project is completed on time and within budget. We're passionate about what we do, and it shows in the quality of our work. We're dedicated to building strong relationships with our clients, contractors, and suppliers, and we believe that this collaborative approach is essential for success in the construction industry.

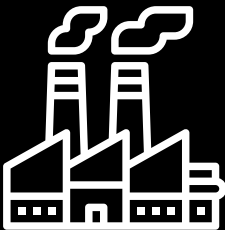
CORE SECTORS

“At Australian Leader, we believe in the value of every project, regardless of its scale. Our primary focus is building strong partnerships and delivering exceptional results on every endeavor.”

Arthur Banasiak | Founder & Director



Residential



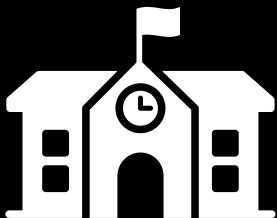
Industrial



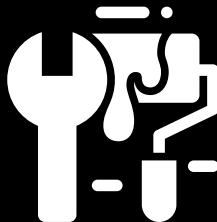
Government



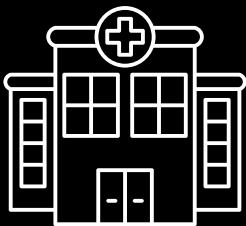
Commercial



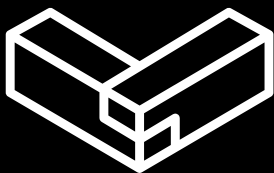
Education



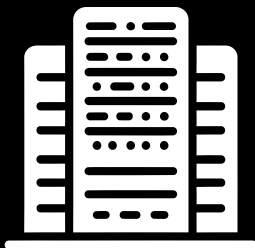
Heritage



Aged Care



Fit Out



Data Centre



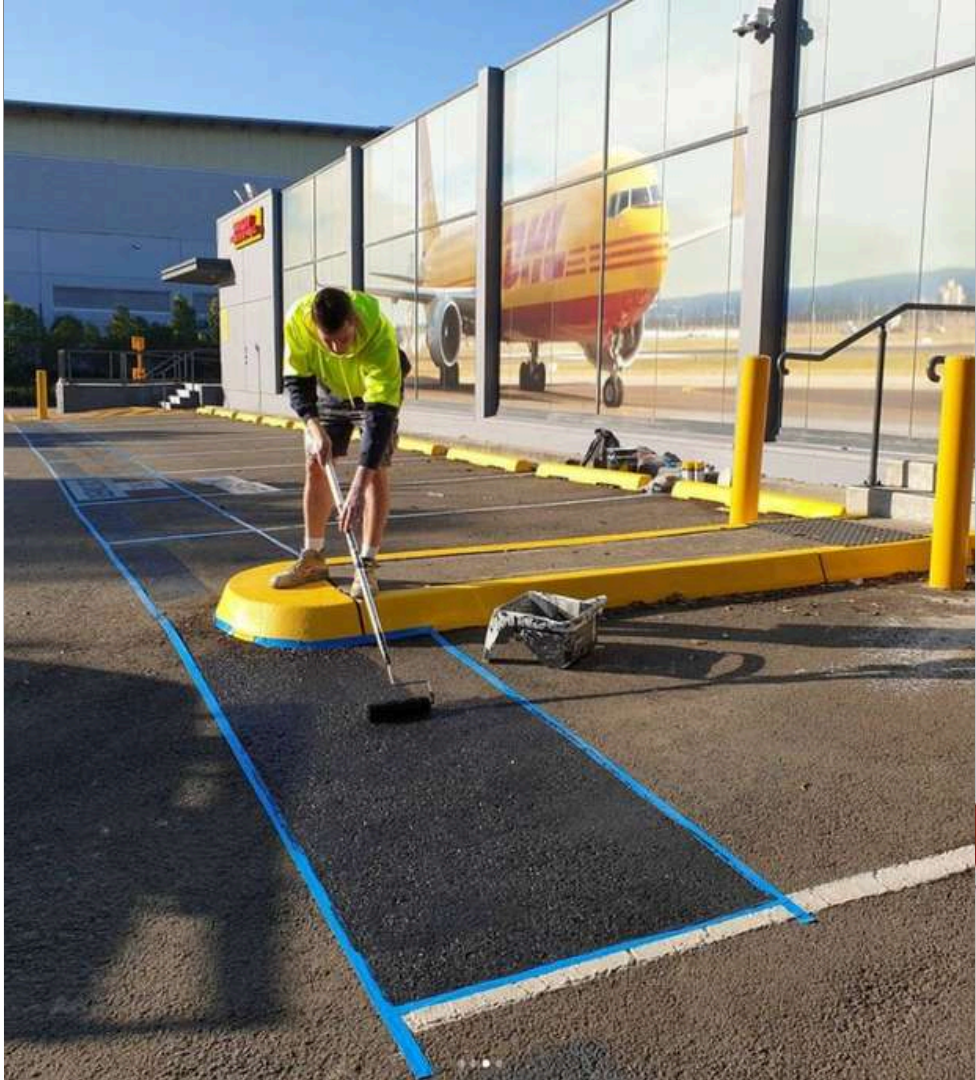
Make-Good

SERVICES

Over the past two decades, Australian Leader has expanded its offerings beyond painting to become a comprehensive construction services provider. Our range of services now encompasses:

- Commercial, Retail & Industrial Make-Good/Defit
- Internal & external painting
- Special finishes:
 - Microcement, Polished plaster, Venetian Plaster, French wash, stucco, raw concrete, wallpaper application, white board paint etc
- Electrostatic spraying
- Line marking and spray on stencil application
- Concrete sealers and concrete staining
- Heritage timber treatment and restoration
- Protective Coating & Rust treatment
- Abseiling & anchor point installation and certification, EWP and Swinging Stage work including:
 - Façade painting and cleaning, window cleaning and remedial work
- Intumescent coating:
 - Promat
 - Cafco
 - Nullifire
 - CAPS coatings
- Epoxy protective coatings
- Floor grinding & shot blasting
- Lead paint removal and encapsulation
- Paint stripping, peel away & soda/sand blasting
- Anti-graffiti application
- Waterproofing architectural coatings
- Window frame restoration and glazing replacement
- High pressure cleaning
- Gutter cleaning
- Roof cleaning and re-painting

This diversification reflects our commitment to meeting the evolving needs of our clients and delivering exceptional results across a variety of projects.



WORK HEALTH & SAFETY, ENVIRONMENTAL & QUALITY

At Australian Leader, we prioritize Work, Health, Safety, Environment, and Quality (WHSEQ) in all our operations. Recognizing the dynamic nature of our industry, we continuously implement, monitor, and update our WHSEQ practices to ensure consistent compliance and performance.

Work Health & Safety

At Australian Leader, Work, Health, and Safety (WHS) is a core value. We are committed to creating a safe and healthy workplace for all our employees, contractors, clients, and delivery partners. We have implemented robust WHS procedures and practices, aligned with NSW Government guidelines, to prevent work-related injuries and ensure the well-being of everyone on our sites.

Environmental

Australian Leader is committed to environmental sustainability. We implement effective practices and procedures to minimize our impact on the environment throughout the construction process. By adopting sustainable building methods and technologies, we strive to create projects that are both environmentally responsible and long-lasting.



Quality

At Australian Leader, we are committed to delivering projects of the highest quality. To achieve this, we partner with reputable consultants and contractors who share our dedication to excellence. Our robust quality management system ensures that all regulatory and stakeholder requirements are met throughout every project.

OUR PEOPLE

At Australian Leader, our team is our most valuable asset. Their combined skills, dedication, and collaborative spirit drive our ongoing success. From senior leadership to project teams, our people are integral to our identity and our ability to consistently deliver exceptional results.

Our team's expertise and experience have enabled Australian Leader to consistently exceed client expectations on complex projects. The strong relationships we build with our clients are a testament to the quality of our work and the dedication of our people.

Every member of the Australian Leader team, from our construction crews to our administrative staff, plays a vital role in our success. We cultivate a collaborative and supportive work environment where individuals can thrive and contribute to our shared goals.

Arthur Banasiak
Founder & Managing Director

Arthur, a seasoned veteran in the construction industry with over three decades of experience, founded Australian Leader with a steadfast commitment to building enduring client relationships and delivering high-quality projects. His extensive knowledge and proven track record have positioned the company as a trusted partner in the industry.

Throughout his career, Arthur has cultivated a reputation for integrity, reliability, and a deep understanding of the complexities involved in successful construction projects. His ability to foster strong collaborative relationships with stakeholders has been instrumental in the company's success.

Under Arthur's leadership, Australian Leader has consistently exceeded client expectations, delivering projects on time, within budget, and to the highest standards of quality. His strategic vision, coupled with his hands-on approach to project management, has enabled the company to navigate the challenges and opportunities of the construction industry with exceptional results.

Gabriel Banasiak
Projects Manager

With a Master's degree in Property Development and Investment and a Bachelor of Commerce, Gabriel brings nearly a decade of experience to the construction and property development sector. His expertise spans both technical and managerial aspects of construction and property development, enabling him to deliver high-quality projects efficiently and cost-effectively.

Gabriel's dedication to client satisfaction and his collaborative approach foster strong relationships with diverse stakeholders. His hands-on leadership, coupled with his unwavering enthusiasm, drives him to achieve excellence in even the most complex projects. Gabriel's ability to lead teams, motivate his workforce, and address challenges effectively ensures successful project delivery.

Gabriel's strong analytical skills and attention to detail allow him to anticipate and mitigate potential risks. He is proficient in developing and managing project budgets, schedules, and resources. Additionally, Gabriel has a proven track record of negotiating contracts and resolving disputes, ensuring projects are completed on time and within budget. His ability to think critically and adapt to changing circumstances makes him a valued asset to the Australian Leader management team.

Michal Dlugosz
Production Manager

With over 15 years of industry experience, Michal has been a cornerstone of the Australian Leader team for nearly a decade, currently serving as the Production Manager. His career began as a carpenter, providing him with a solid foundation in the technical aspects of construction. Over the years, Michal's extensive experience and strong leadership skills have enabled him to successfully oversee complex projects.

Michal's dedication to continuous improvement drives him to seek out new opportunities for professional development. He is always exploring innovative techniques and technologies that can enhance project efficiency and quality. His commitment to safety is unwavering, and he ensures that all team members are trained and equipped to work in a safe and compliant manner.

Beyond his technical expertise, Michal is a mentor and role model for his team. He fosters a positive and supportive work environment, encouraging collaboration and teamwork. Michal's passion for construction is contagious, and he inspires his team to strive for excellence in everything they do.



FEATURE PROJECTS





HERITAGE

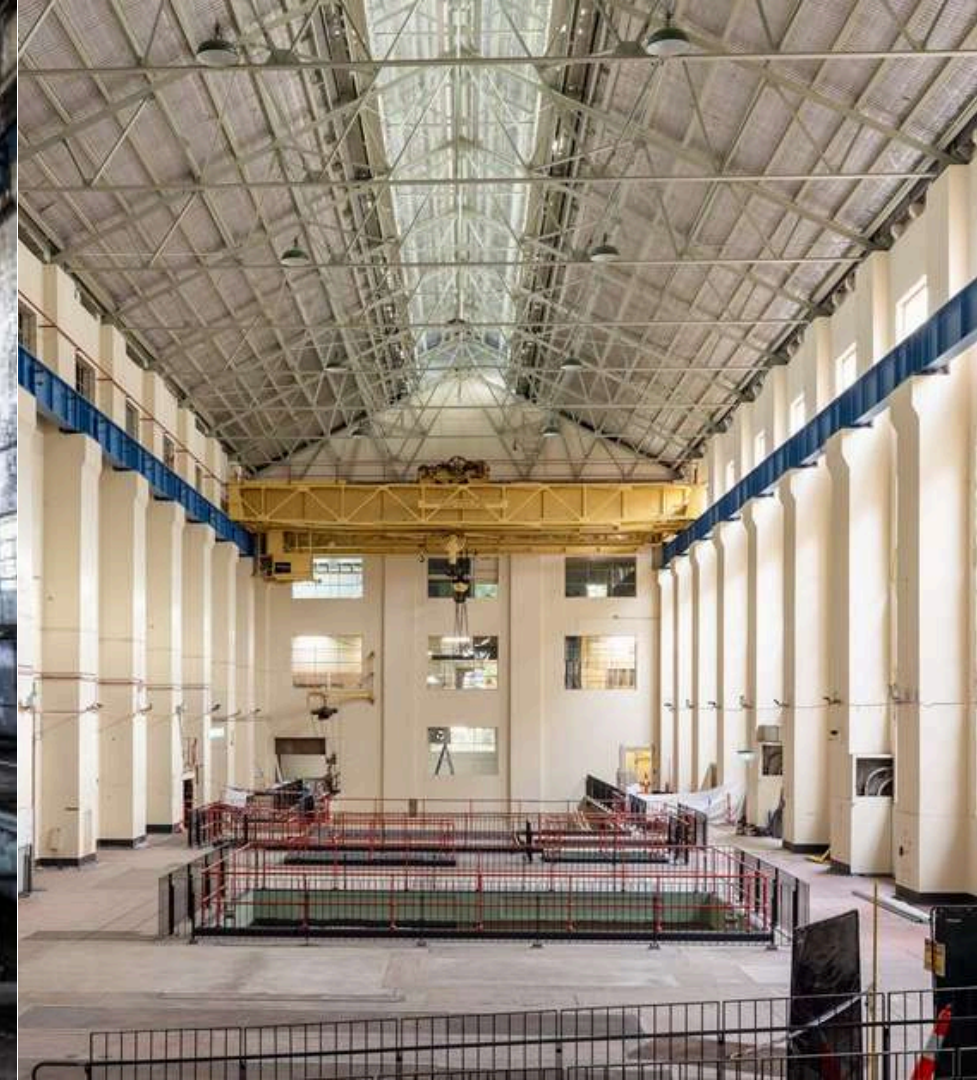
White Bay Power Station Stage 1

Client: FDC Construction & Fitout

The heritage listed White Bay Power Station is one of Sydney's oldest surviving power stations and has now evolved into an exciting cultural and community space. Constructed between 1912 and 1917, the Power Station quickly became essential to the city's growth, lighting up homes and businesses across Sydney. In 2021, a major investment kicked off the exciting transformation of White Bay Power Station into a lively cultural hotspot. Ongoing restoration efforts by Placemaking NSW are breathing new life into this historic site, making it a welcoming space for the community.

Works completed include:

- Lead paint removal
- Lead paint encapsulation
- Hazmat work
- Soda blasting
- Protective coating
- Painting
- Abseiling & EWP access
- Cleaning
- Heritage window frame restoration and glazing replacement





DATA CENTRE

Equinix SY3 & SY5 Data Centre - 518 Gardeners Road Alexandria

Client: Erilyan

Equinix International Business Exchange™ (IBX) SY3 is one of the four data centers in the Equinix Sydney Campus, the most interconnected data center campus in Australia. SY3 offers rich interconnection opportunities to Equinix's secure digital ecosystems in Australia and around the world. It also facilitates thriving cloud and IT and enterprise ecosystems. SY3 is a 2-story, pre-cast, reinforced concrete building.

Works completed include:

- Internal & External Painting
- Intumescent Coating
- Concrete Sealers
- Abseiling
- Anti-Graffiti



COMMERCIAL/HERITAGE

1-11 Hayes Road Roseberry - Goodman Group Head Office

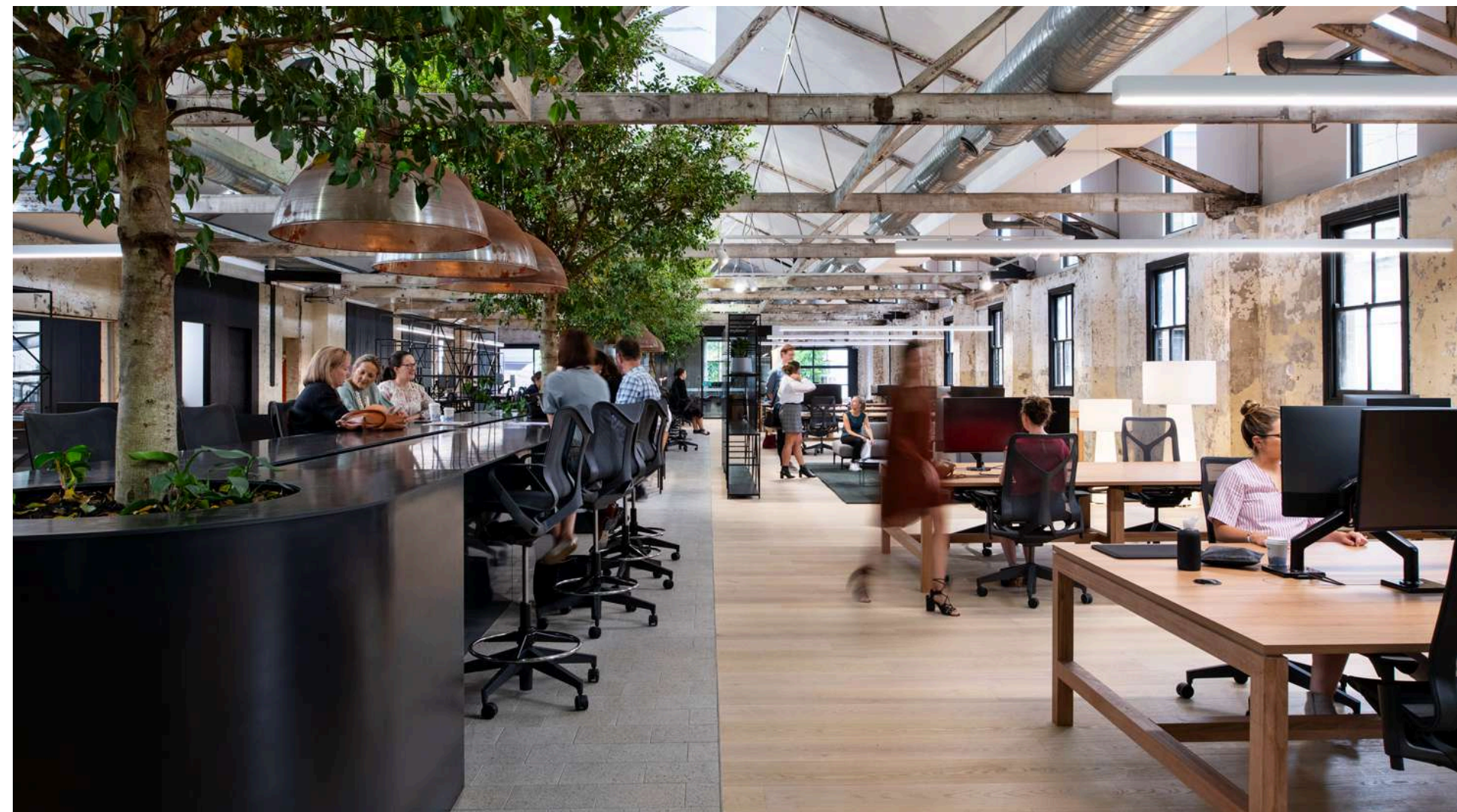
Client: Intermain

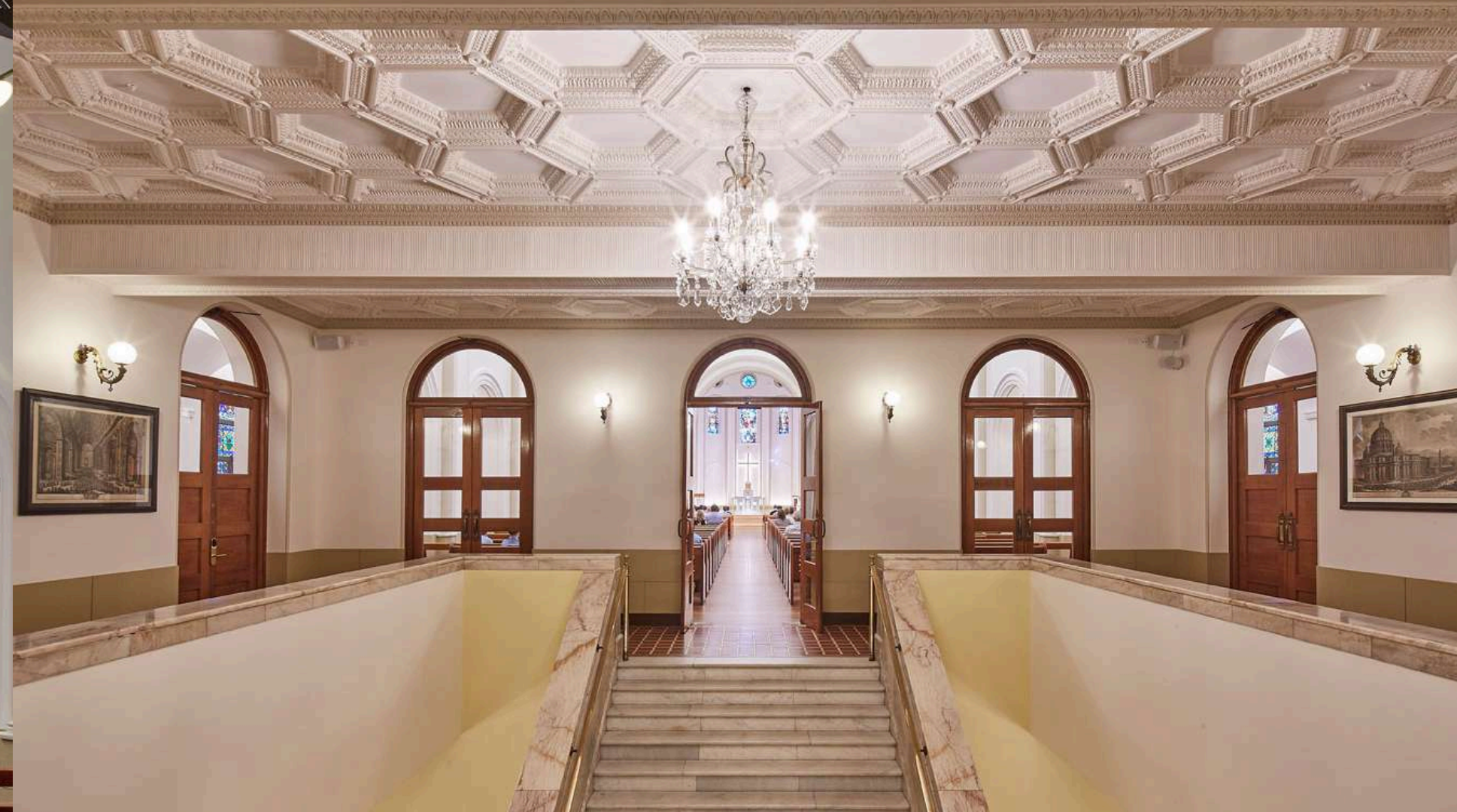
The Goodman HQ, The Hayesbery, is a state-of-the-art workspace spearheading the evolution of 'office of the future'. In conjunction with Woods Bagot, Goodman adopted the adaptive reuse model and created a road map for a sustainable, innovative and COVID-19 safe workspace.

The Hayesbery was designed with employees health and wellbeing at the forefront during the COVID-19 era. It is a flexible environment created and considered for employees to return to the workplace to connect with their community, create and collaborate.

Works completed include:

- Internal & External Painting
- Venetian Plaster
- Soda Blasting brick facade
- Epoxy protective coating to metal roof
- Rust treatment
- Lead paint removal





EDUCATION/HERITAGE

St Josephs College - Chapel

Client: Fugen Constructions

In Australia in 1881 the Marist Brothers founded St Joseph's College, Hunters Hill, and their presence continues to inspire and inform the life of the community to the present day. Australian Leader were engaged through Fugen Construction as part of the reburishment work to the existing heritage-listed Chapel at St Joseph's College. The Chapel that is often referred to as the 'heart' of the College holds significant value and enormous consideration was given to its rich history.

Works completed include:

- Lead encapsulation
- Lead paint removal
- Painting
- Furniture and timber stripping, staining and French polishing



INDUSTRIAL

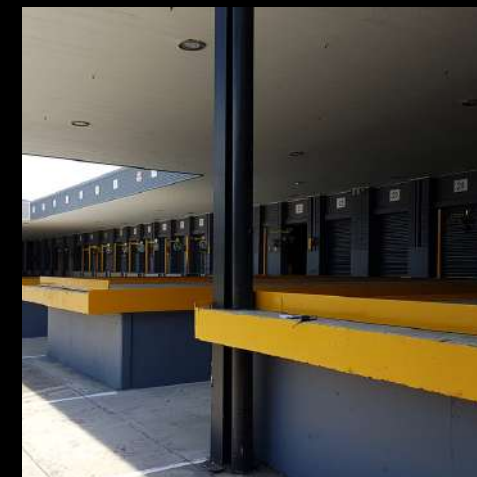
Goodman | 7 - 21 Centenary Avenue Moorebank

Client: Intermain

Encompassing 40,000 square meters across two warehouse facilities, 7-21 Centenary Avenue represents Amazon's inaugural logistics presence in Australia. Australian Leader was contracted by Intermain, the design-and-construct contractor, to provide a range of services over a 12-month period.

Works completed include:

- Repainting external elevation of warehouse metal cladding
- Repainting internal structural steel
- Painting the internal office fit-out + refurbishment areas
- Electrostatic painting to roller shutter gates
- Line marking removal and installation



COMMERCIAL/HERITAGE

223 Liverpool St, Darlinghurst

Client: Fugen Constructions

Australian Leader were engaged by Fugen Constructions who were engaged to undertake works spanning 5 levels of a heritage commercial building at 223 Liverpool Street, Sydney namely The HUB Hyde Park. Whilst undertaking the base build construction works, Fugen was subsequently engaged by the client on behalf of the tenant, HUB Australia to fitout all 5 floors to create a contemporary shared office space.

Work completed include:

- Refurbishment to heritage internal surfaces
- Painting to new fit out areas
- Stain blocking
- Line marking





BUSINESS PARK

63 Parramatta Road Silverwater "Gateway"

Client: Knight Frank

Australian Leader was engaged by Knight Frank as the main contractor to execute the comprehensive rejuvenation of Gateway Business Park. The project necessitated precise coordination of multiple swinging stage movements around the building, as well as meticulous outage planning with various telecommunication companies to ensure the safe and efficient power down of their high-power antenna assets during construction activities.

Works completed include:

- Repainting external elevations
- Cleaning windows
- Access:
 - Scissor Lifts
 - Boom Lifts
 - Swinging Stages
- Line marking



COMMERCIAL/HERITAGE

Wiltshire International | 75 Pitt Street Sydney

Client: Intermain

Spread over 14 floors, Australian Leader were engaged by Intermain as part of their collaboration with RH Contracting, architects NettletonTribe and heritage consultants Architectural Projects to rejuvenate the previously owned Thai Airways building.

Our team worked closely with Intermain coordinating with City of Sydney and heritage consultants, Architectural Projects, to ensure heritage significance was maintained throughout the construction process.

Work completed include:

- Facade painting
- Internal painting
- Facade window replacement and restoring heritage window frames
- Abseiling



WHAT OUR CLIENTS SAY

“



Jason Sultana

Intermain | Director

"We've been working with Australian Leader for over a decade, and they've consistently exceeded our expectations. Their team is not only skilled but also incredibly reliable and easy to work with. We've built a strong partnership that we value immensely."

Bob Black

HiPac Constructions | Managing Director & Masters Builders' Association NSW

"We've had the privilege of working with Australian Leader on a variety of projects, and we've always been impressed by their expertise and dedication. They're not just contractors; they're problem-solvers who help us achieve our goals. We're grateful for their ongoing support."

Stephen Flannery

Fugen Constructions | Managing Director

"We've collaborated with Australian Leader for years and have always appreciated their professionalism and responsiveness. They consistently go the extra mile to ensure our satisfaction, delivering projects on time and within budget."

Peter Aliferis

FDC Construction & Fit out NSW | Senior Project Manager

"From small fit outs to large-scale projects, Australian Leader has always delivered exceptional results. Their attention to detail and commitment to quality are unmatched. We've been so impressed with their work that we've referred them to several of our business partners."

Karl Mayoh

Erilyan Pty Ltd | CEO & Founder

"One of the things we appreciate most about Australian Leader is their ability to understand our unique needs and tailor their services accordingly. They've become a trusted advisor, helping us navigate complex projects and make informed decisions."

Clint Bowen

Fluid Building Services | Founder & Director

"The level of communication and transparency at Australian Leader is exceptional. They keep us informed every step of the way, and they're always open to feedback or suggestions. It's a partnership based on mutual respect and trust."



CONTACT US

Suite 7/1051 Pacific Highway Pymble NSW 2073

02 9402 7647

office@australianleader.com.au

www.australianleader.com.au

**20 YEARS, 3,000+ PROJECTS
COMPLETED**

